



CECOTTICOLLEZIONI

campionario materiali  
samples

l'unicità di un prodotto ceccotti collezioni è parte della sua materia, di ogni suo elemento costitutivo. legni, vetri, metalli e tutti gli altri materiali che compongono un mobile ceccotti sono frutto di un accurata selezione, condotta in tutto il mondo, per individuare le migliori materie prime con cui dare forma e proposte esclusive. tutti i componenti meccanici, cerniere e ferramenta sono realizzati dall'azienda, elementi essenziali di ogni proposta e parti integranti della sua unicità.

the unicity of ceccotti collezioni's products is also due to an accurate selection of each component. wood, metal, glass and all other materials making up a piece of ceccotti's furniture, are chosen from all over the world to guarantee the best primary matter for creating exclusive proposal. the hardware, made by the company itself, is an essential part of each proposal and contributes to it's unicity.

ceccotti utilizza esclusivamente legno massello e multistrati di pioppo impiallacciato. taglio e lavorazione dei legni sono sempre condotti con metodi manuali, con assemblaggio tramite collanti vinilici. per la tinteggiatura, vengono utilizzate diverse finiture con colorazioni ad acqua, stracciatura eseguita a mano e finitura a base di cera naturale.

i legni provengono da ogni parte del mondo, esprimendo un patrimonio di tradizioni, colori e venature. differenti valenze stilistiche che la collezione interpreta. ciliegio: provenienza nord america. rovere di slavonia: provenienza croazia. noce italiano: produzione nazionale. noce americano: nord-est degli stati uniti. zebrano: africa occidentale. palissandro: india orientale. acero: nord europa.

ceccotti collezioni used only solid wood and poplar-plywood veneered wood. sawing and wood work is done by hand, the pieces are then assembled together using vinyl glue. finishes carried-out with water colours that are then wiped with a cloth by hand, natural wax to finish.

the wood used comes from all over the world and express a heritage of traditions, different colours and wood grains. different styles are represented through the collection. cherry wood: north america slavonia oak: place of origin croatia. italian walnut: italy. american walnut: north-east of the usa. zebra wood: western africa. rosewood: eastern india. maple: northern europe.

legno  
wood



ciliegio naturale  
natural cherry-wood



ciliegio work  
cherry-wood colour work



ciliegio tinto noce  
cherry-wood stained walnut



ciliegio tinto noce americano  
cherry-wood stained American walnut



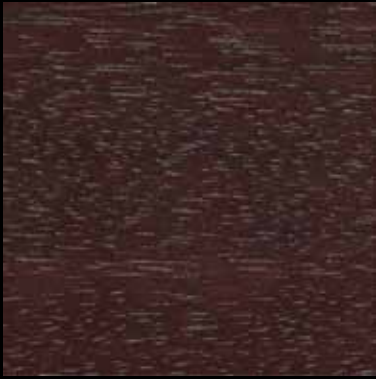
ciliegio tinto wengé  
cherry-wood stained wenge



noce americano  
American walnut



noce americano scuro  
dark American walnut



noce americano brown  
American walnut stained brown



noce americano moka  
American walnut stained moka



noce italiano  
italian walnut



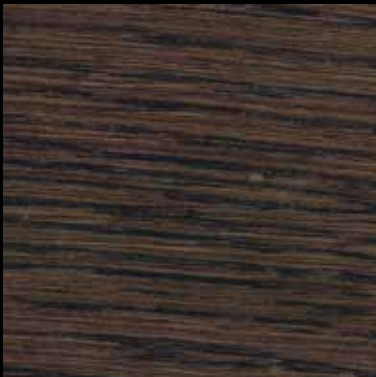
rovere sbiancato  
bleached oak



rovere tinto noce americano  
oak stained American walnut



rovere tinto wengé  
oak stained wenge



rovere tinto moka  
oak stained moka



acero  
maple



palissandro  
rosewood



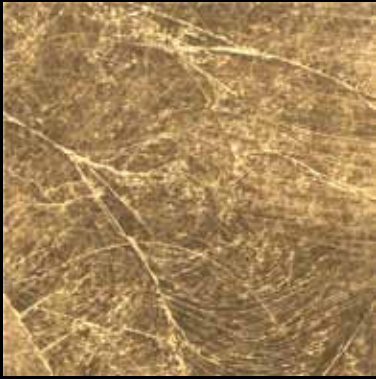
zebrano  
zebra-wood



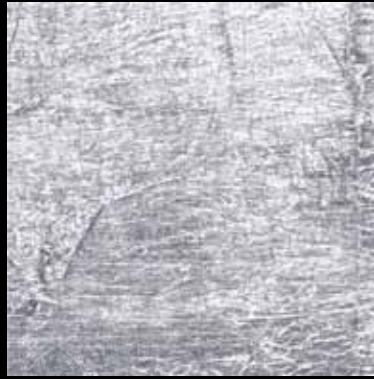
ebano makassar  
ebony makassar



wengé  
wenge



foglia oro  
gold-leaf



foglia argento  
silver-leaf



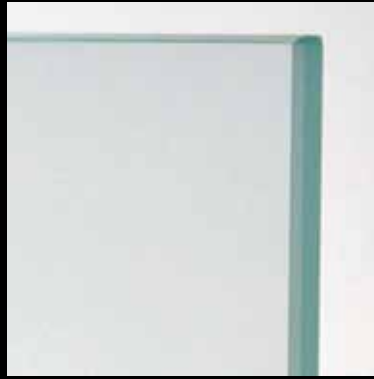
i vetri utilizzati, diversi per singoli prodotti, appartengono alle seguenti tipologie: vetri temperati, ovvero fino a 5 volte più resistenti di un vetro normale; visarm ovvero vetro doppio con pellicola interna; vetri singoli, disponibili nelle versioni: trasparente, madras, bronzato e fumé.

different types of glass are used: tempered glass that is 5 times more resistant than a normal glass; visarm a double glass with a film between; single glass, available in various finishes as transparent, sandblasted, bronzed or smoked colour.

vetro  
glass



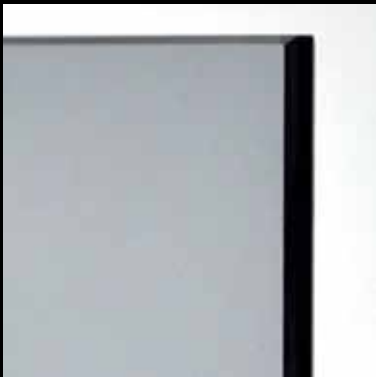
**trasparente**  
transparent glass



**madras**  
sandblasted glass



**bronzato**  
bronzed glass



**fumé**  
smoked glass



pietra  
stone



**bianco statuario**  
white statuary (italy)



**galala (egypt)**



**pietra santafiora**  
stone santafiora (italy)

metallo  
metal



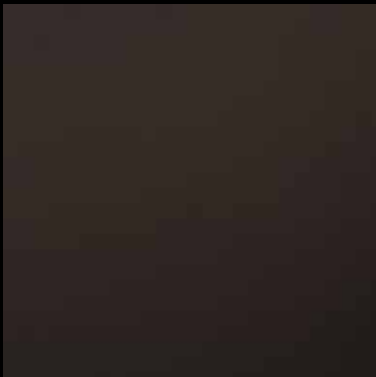
**ottone**  
brass



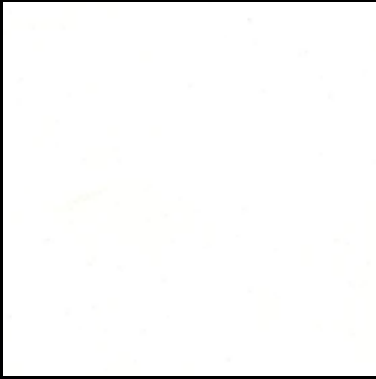
**ottone brunito**  
burnished brass



**ottone nichel satinato**  
satin nickel brass



**acciaio nichelato nero**  
satin nickel steel



bianco  
white



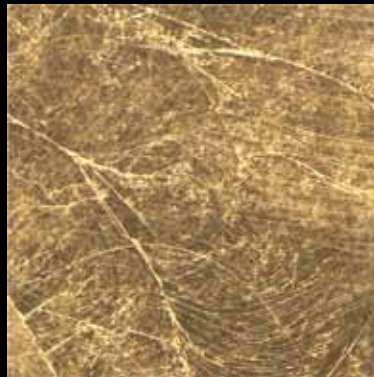
nero  
black



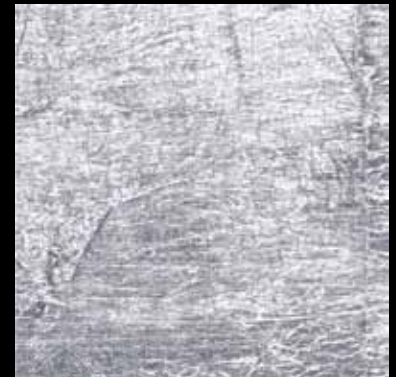
arancio  
orange



azzurro  
light blue



foglia oro  
gold-leaf



foglia argento  
silver-leaf

tessuto  
fabric





LAVELLO 14



STEELCUT 110



SIDE 18



LAVELLO 15



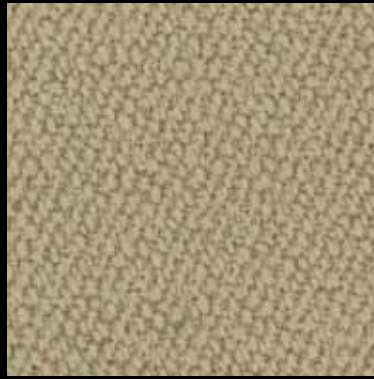
LAVELLO 01



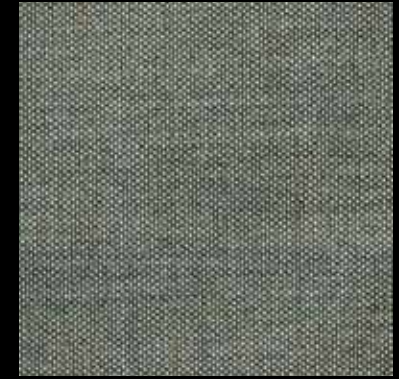
STEELCUT 240



**DIVINA 3 224**



**VIDAR 4015**



**REMIX 2 133**



**SIDE 24**



**BALDER 2 4473**



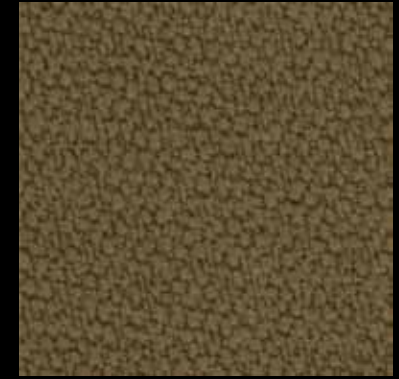
**LAVELLO 22**



**DIVINA 3 356**



**BALDER 2 470**



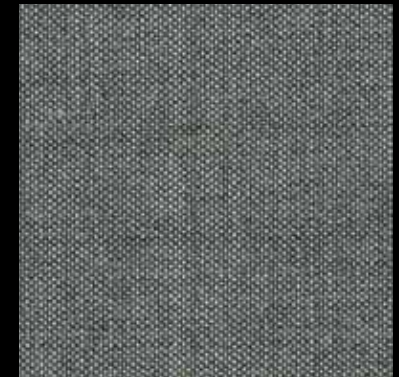
**VIDAR 2074**



**DIVINA 2 280**



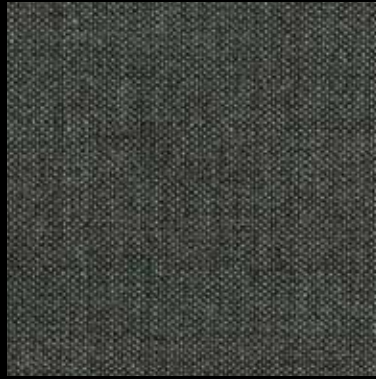
**VIDAR 1970**



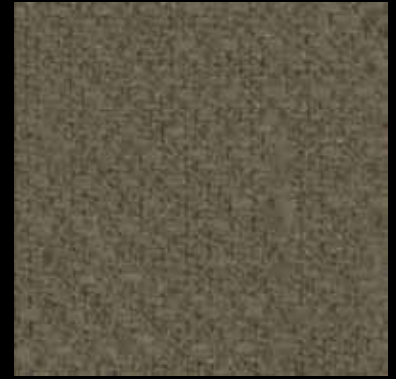
**REMIX 2 143**



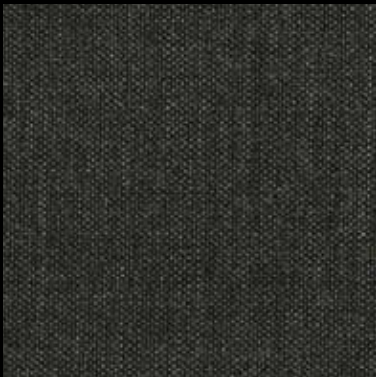
DIVINA 3 173



REMIX 2 163



LAVELLO 28



REMIX 2 173



BALDER 2 1880



DIVINA 3 191



STEELCUT 190



SIDE 25



VIDAR 1880

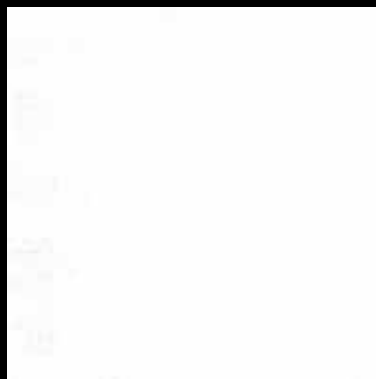


LAVELLO 10

**tessuto tendine**  
curtain fabric



LINO ECRÙ



LINO GREZZO



COTONE BIANCO

**BALDER 2** 26% cotone  
68% lana vergine  
6% poliammidica



**DIVINA 2 e 3** 100% lana vergine



**LAVELLO** 73% viscosa. viscose  
27% lino. linen



**SIDE** 75% viscosa. viscose  
25% poliestere



**STEELCUT** 90% lana vergine, pettinata  
10% nylon



**VIDAR** 94% lana vergine  
6% poliammidica



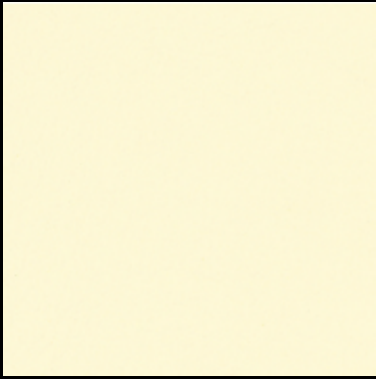
**REMIX2** 90% lana vergine, pettinata  
10% nylon



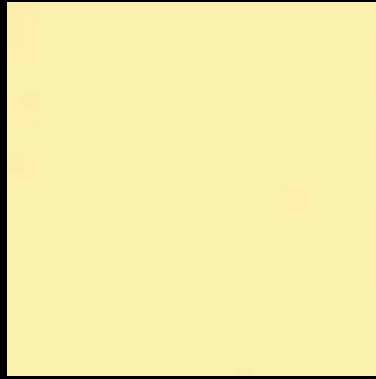


pelle  
leather

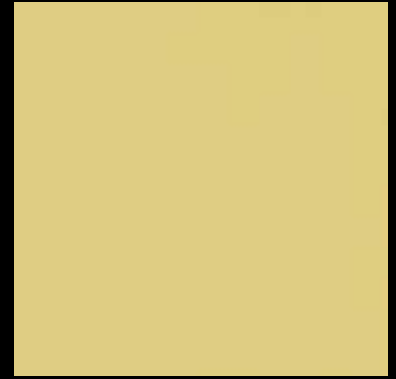




2190



2024



2004



2054



2062



2126



2040



2076



2002

**spessore**  
thickness

1,2/1,4 mm

**tipologia**  
lether types

**fiore corretto**  
corrected grain

**origine animale e provenienza**  
raw material

**pelli bovine europee**  
european raw hides

**tipo di concia**  
tannage

**ai sali di cromo**  
chrome tannage

**tipo di tintura**  
dyeing

**all'anilina passante in botte**  
aniline through-dyeing

**tipo di rifinitura**  
finishing

**pigmentata**  
pigment finishing



201 testa di moro



202 antracite



204 fango

**spessore**  
thickness

1,1/1,2 mm

**tipologia**  
lether types

**pieno fiore**  
full grain

**origine animale e provenienza**  
raw material

**pelli bovine europee**  
european raw hides

**tipo di concia**  
tannage

**ai sali di cromo**  
chrome tannage

**tipo di tintura**  
dyeing

**all'anilina passante in botte**  
aniline through-dyeing

**tipo di rifinitone**  
finishing

**pura anilina**  
pure aniline

### consigli per mantenere inalterata la qualità della pelle



evitare la luce diretta del sole  
avoid placing leather near direct sun



evitare l'esposizione a fonti di calore  
keep the leather away from heat sources



spolverare regolarmente la pelle con un panno morbido ed asciutto  
dust regularly with a soft and dry cloth

i colori del campionario sono indicativi  
the colours in the sample card are indicative